

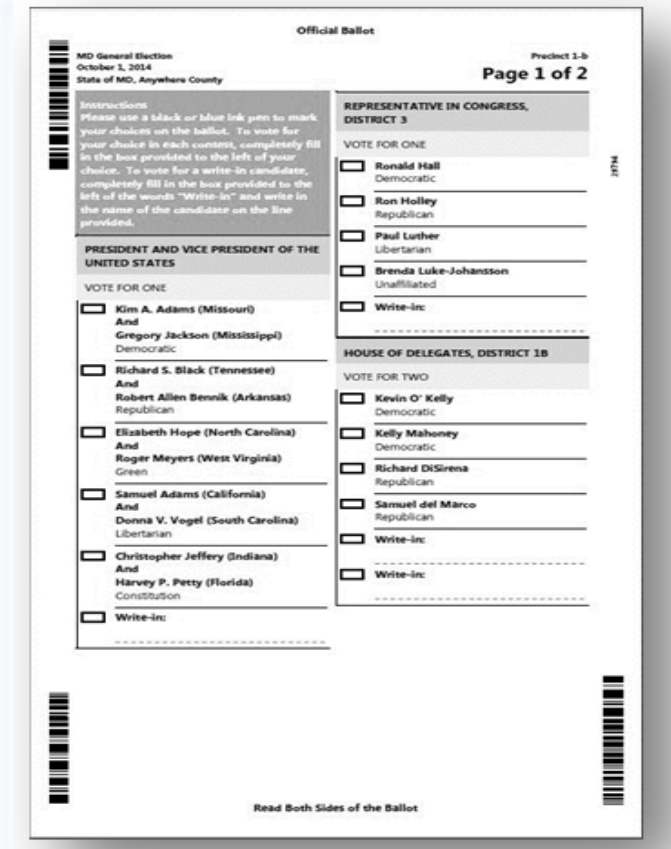
Voter Instructions

Paper Ballot Voting on the Verity Voting System

1. Mark Your Ballot

Completely fill the box next to each choice.

- Use a black or blue ink pen to mark your choices.
- The instructions tell you how many choices you have for each contest.
- To vote for a candidate whose name does not appear on the ballot, completely fill the box next to "Write-In" and write the candidate's name on the line provided.



2. Insert Your Ballot in the Machine

You may insert your ballot face-up, face-down, top-first or bottom-first.

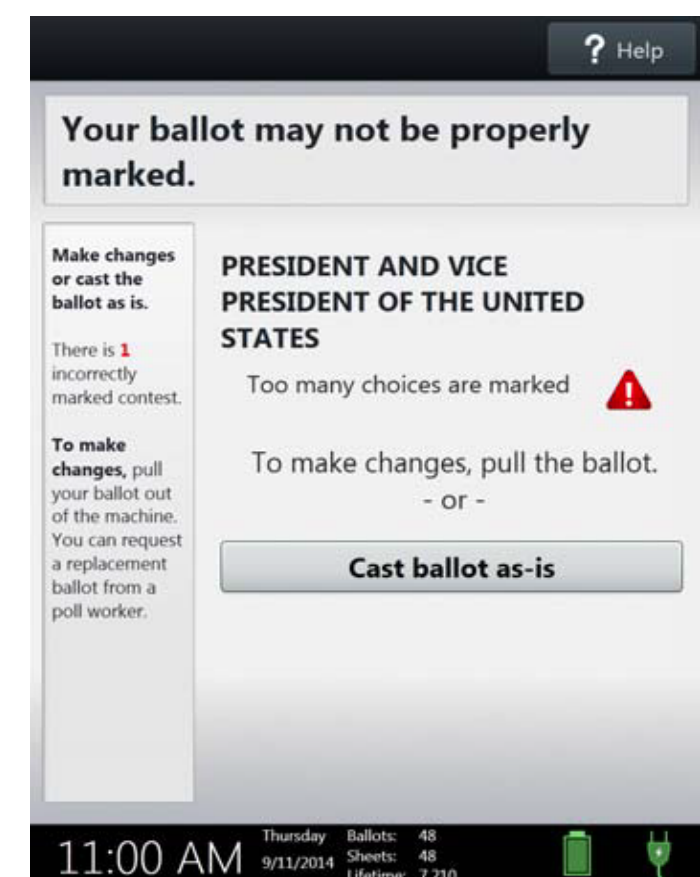
- The scanning machine will read both sides of your ballot at the same time.



3. Check Your Ballot and Cast Your Vote

Watch for any messages that say, "Your ballot may not be properly marked."

- Read messages carefully to see if there are contests with too many marks, or too few.
- If you wish to change your ballot, remove it from the machine. When your changes are complete, re-insert your completed ballot into the machine.
- To cast the ballot as-is, select "Cast the ballot as-is."



4. Wait for the Flag

Complete your voting session.

- Your voting session is complete when the scanning machine accepts your ballot and displays the message, "Your Vote has been recorded. Thank you for voting."

